



# Strengths & Features

- MapMedia's mm3d electronic chart is especially designed for MaxSea Time Zero and Furuno NavNet 3D.
- MapMedia mm3d packs include cartography, 3D data and satellite images.
- Exclusive PhotoFusion technology: mixing satellite images directly onto marine charts.
- Worldwide online catalogue providing a choice of chart formats:
  - ❖ mm3d Raster
- ❖ mm3d Vector C-Map by Jeppesen 
- ❖ mm3d Vector Datacore by Navionics 
- MapMedia mm3d Raster charts are produced from current national hydrographic office charts.
- MapMedia mm3d Vector are produced in compliance with the S52 electronic chart visualization standard adopted by the International Maritime Organization (IMO).

# MapMedia Catalogue

Photos : Paul ROBIV / Document non contractuel - \_072011EN-MPM-BrochureMM3D

PUBLICISACTIV - RCBS37994483



**MaxSea International** - Technopole Izarbel - allée Théodore Monod - 64210 Bidart - France  
t/ +33 559 43 81 00 - f/ +33 559 43 81 01 - info@maxsea.fr

**WWW.MAXSEA.COM**

MapMedia is a trade mark of the company MapMedia SAS.  
MaxSea is a trade mark of the company MaxSea International SAS.  
Navionics is a trade mark of the company Navionics SpA.  
C-Map is a trade mark of the company Jeppesen.

**MAPMEDIA**

# MapMedia, the best in marine cartography

In 1994 MapMedia developed a new technology of digitalization and formatting geographical data that enabled nautical charts to be displayed seamlessly with automatic scaling. MapMedia chart formats have been on the forefront of technology for over 20 years.

MapMedia charts are available in Raster and Vector chart formats. Our charts are produced in MapMedia's new mm3d format, especially designed for MaxSea Time Zero software and Furuno NavNet3D.

MapMedia offers a collection of over 6000 electronic marine raster charts produced directly from paper nautical charts issued by national hydrographic offices.

MapMedia mm3d Vector Charts are conformed to International Hydrographic Office display standard, called S-52.

In partnership with the most reliable charts editors such as Jeppesen and Navionics, MapMedia offers a worldwide catalogue of vector charts in the new MapMedia mm3d format.

The goal of this standard, adopted by all the major hydrographic offices of the world, is to present navigation information using a simplified and intuitive display, especially adapted to electronic presentation.



**mm3d**



# Electronic Cartography:

## Raster Charts or Vector Charts ?

It's hard to say which format is best; the choice of formats is mainly based on personal taste and habits. Traditional paper chart users tend to like Raster Charts, since these are digital reproductions of nautical charts. Whereas Vector Charts users will prefer to stick to this format that allows customization of the display.

### RASTER CHARTS

MapMedia mm3d Raster Charts are geo-referenced, digital images of Official Hydrographic Office and selected private navigational charts, designed for MaxSea Time Zero navigation software and Furuno NavNet 3D product line. True colour copies of the official paper marine charts of hydrographic services, raster charts are the most reliable, allowing you to display on screen the official paper marine charts that you were accustomed to use.

**+** If you are used to paper charts, MapMedia Raster charts are an exact color copy of what you have always used.

**Reliability:** a true color copy of the official paper chart of hydrographic services.

**-** Raster charts appear "grainy" when over-zoomed.



# RASTER or VECTOR

### VECTOR CHARTS

MapMedia mm3d Vector Charts are computer generated, utilizing a vector database to build the chart display. Data are stored in layers and record every nautical chart features such as coastlines, buoys, lights, etc. Details on the chart can be turned on and off, and objects can be clicked on to learn more details (position, color, size, shape, etc.). In many areas of the globe where there's no hydrographic service, vector charts are often the only reference.

**+** **Dynamic Data** such as navigation lights, buoys, soundings are stored and managed in a database allowing customization of the display.

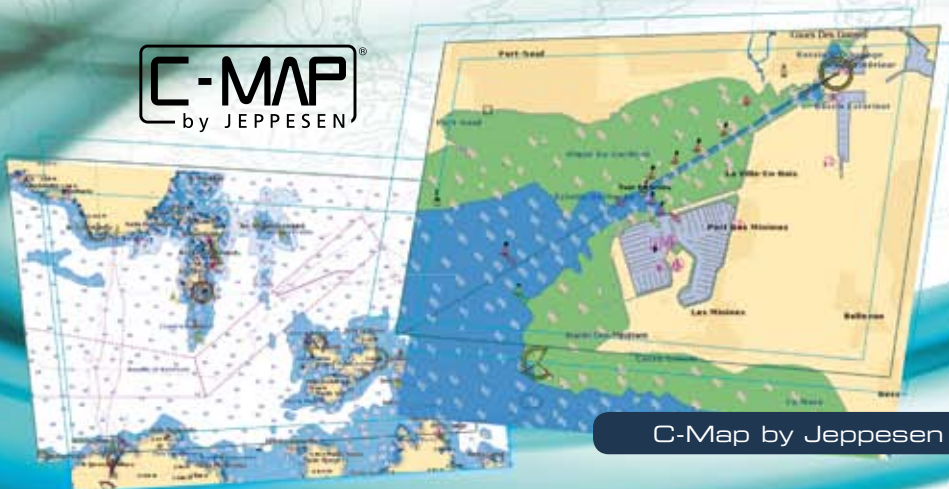
**-** When over-zoomed, vector charts data may appear inaccurate or misleading.



# mm3d Vector : The best of both worlds

MapMedia mm3d offers you the best in vector charts and allowing you to choose between two different vector chart formats:

- C-Map by Jeppesen
- Datacore by Navionics



C-Map by Jeppesen



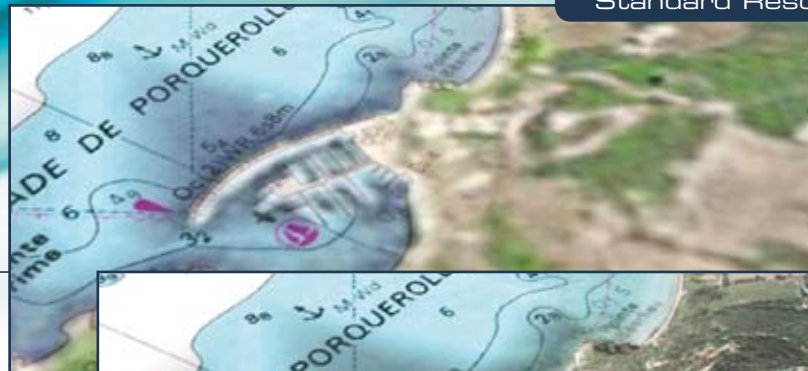
Datacore by Navionics

# mm3d Satellite Images: Choose High Resolution

MaxSea Time Zero utilizes satellite images in new and exciting ways called PhotoFusion. This new technology fuses Satellite images directly onto your charts. You clearly differentiate shallow waters or ocean bottom nature, information particularly useful when navigating along the coastline or approach a port. Photofusion allows better anticipating dangers and visualizing your surroundings.

Satellite images are included with each mm3d data pack in standard resolution. High resolution satellite images are only available for certain areas. MapMedia continues to work with data providers to expand and update the satellite images catalogue.

Standard Resolution

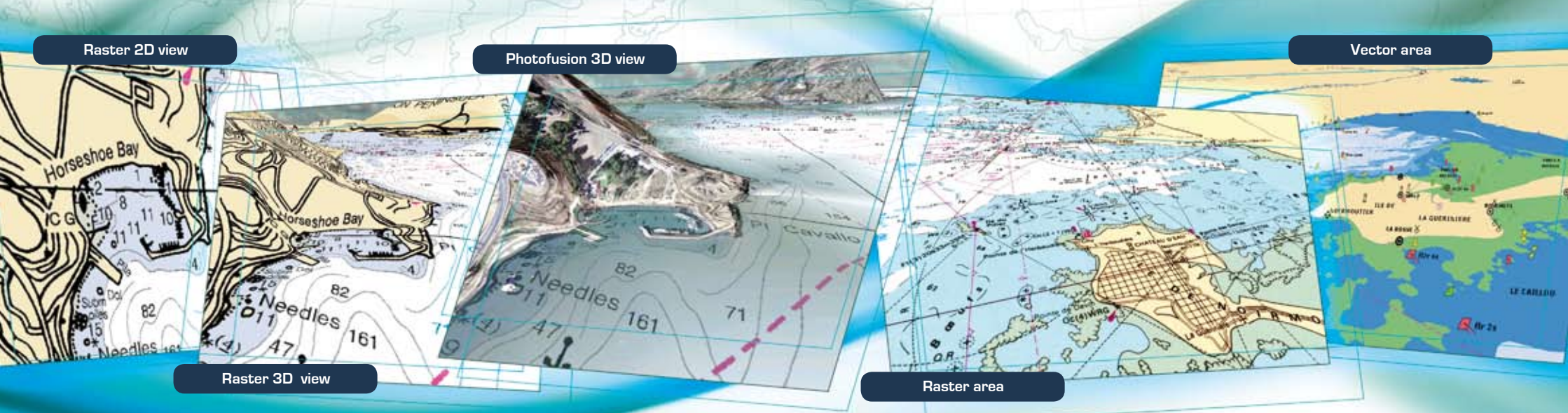


High Resolution

# mm3d, the new generation of Chart and Data format

MapMedia's new mm3d areas are specifically designed to utilize MaxSea's new Time Zero technology. These charts allow optimal use of all versions of MaxSea Time Zero software and the Furuno NavNet 3D product line.

- **Immediate zooming and scrolling** of the chart without any lag.
- **PhotoFusion**, the feature enable to fuses satellite images directly onto your chart, to simultaneously display the most relevant information from both satellite images and nautical charts
- **3D visualization** to increase situational awareness.



MapMedia mm3d expands the concepts and capability of nautical cartography to new dimensions. MapMedia mm3d Data Packs include charts, satellite images and 3D modeling data.

The MapMedia mm3d catalog now covers the entire world, offering the choice between Raster Charts or Vector Charts for all MapMedia mm3d Data Pack areas, according to availability ([www.mapmedia.com](http://www.mapmedia.com)).

# MapMedia Catalogue

Wide & Mega Wide

Two different area sizes available:

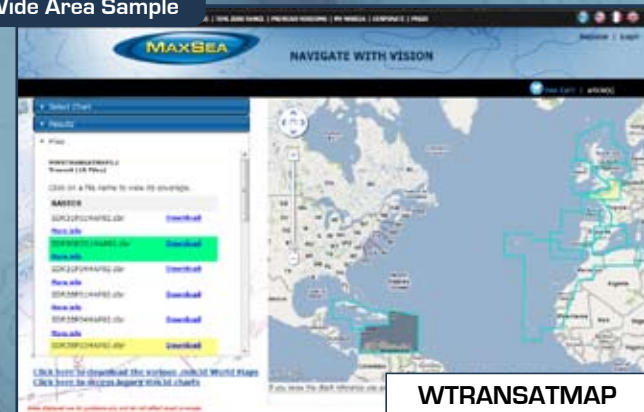


Wide Area Sample

R31MAP

IBERIA

Mega Wide Area Sample



WTRANSATMAP

TRANS ATLANTIC

MapMedia Online Catalogue available at  
[www.maxsea.com](http://www.maxsea.com)

Find out more information on our web site :

[WWW.MAXSEA.COM](http://WWW.MAXSEA.COM)